



KOR-1 - Testing device KOR-1

Use

KOR-1 device is used to perform corrosion tests of metallic materials.

Description

Corrosion tests of metallic materials are performed using two gases, H₂S gas and an inert gas (e.g. Argon). Gas paths of both gases, from gas source up to suction, are performed similarly. To operate the device there are accessible terminal of control system, signal lights and manual control.

In the area of test cabinet and test space, several H₂S sensors are located. Outputs of these sensors are implemented into the control system. In case of signaling the presence of H₂S, electric valves C are closed and acoustic alarm is given. The test cabinet is also equipped with heaters and temperature sensors. If the temperature falls below the set value (set in the control system) then heating is turned on.

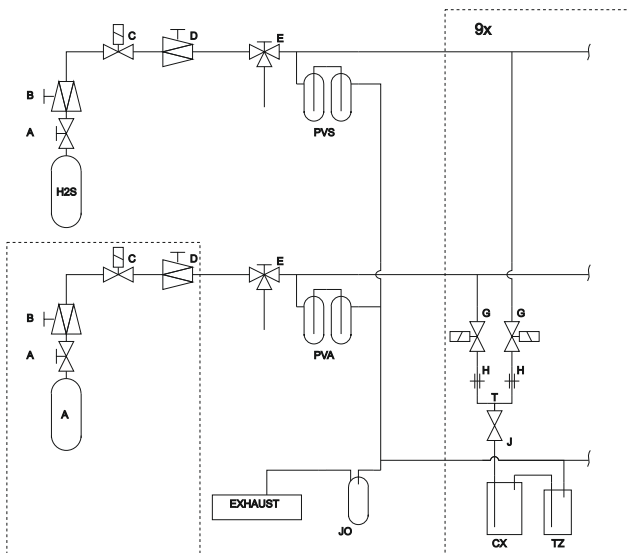
The stand include test cell CX, pressure plug TZ, tensioning mechanism of tested materials, limit switch (contacts loaded into the control system), diaphragm valves and control box. There are buttons placed, labeled H₂S and Ar on it, for manual control of valves G and signaling, indicating an open valve G.

Manual control of valves is superior to the control system. The control system allows you to run automatic test control and time measuring with crack check of the control sample. The manual control selected valve remains closed permanently, manual control has priority over the automatic, which has no further effect.

Signaling from H₂S sensors is also implemented into the system, when limits are exceeded, the alarm sound is turned on and red LED remains lit while concentration is reduced below its limit. The system also measures the temperature on two sensors, which are placed, as needed, inside the test cabinet.

Technical parameters of KOR-1:

Design	Normal areas
Nominal supply voltage	230VAC/50Hz
Power consumpt.	1800VA
Connect. cables cross-section	0,08 to 4,00mm ²
Ambient temperature	0°C to +40°C
Relative humidity	95% max. without condensation
Protection	IP 54/20



Gas paths of KOR-1

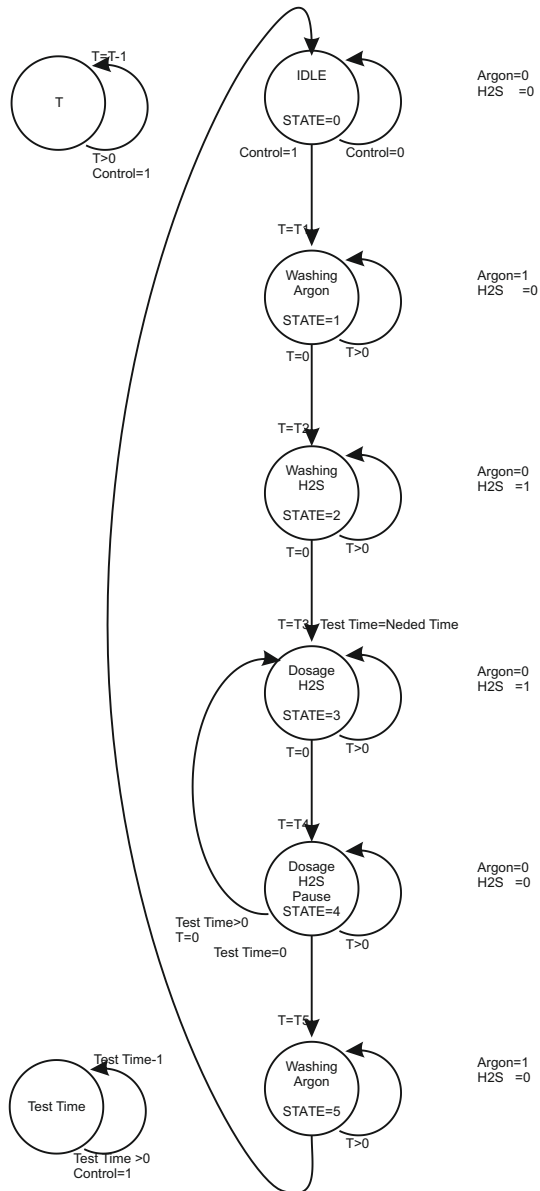


Switching cabinet of KOR-1

The catalogue has only those selected important parameters for your final decision. For project designs always ask for the user's guide for this product and any engineering consultation about possible uses.



KOR-1 - Testing device KOR-1



State diagram of KOR-1

The catalogue has only those selected important parameters for your final decision. For project designs always ask for the user's guide for this product and any engineering consultation about possible uses.